

WEIGHT = X X X L B
 AUTOMATIC ? ←

▲▲▲▲▲

WEIGHT = X X . X L B
 SETUP ? ←

Calibration Switch

WEIGHT = X X . X L B
 CHARGING

Calibration Switch (▲)

CALIBRATION
 MIN WEIGHT ON ←

ENTER

CALIBRATION
 MAX WEIGHT ON ←

ENTER

CALIBRATION DONE
 REMOVE WEIGHT ←

ENTER

OVER CHARGE
 AMOUNT = X . XX K G ←

▲▶ENTER

CALIBRATION PROCEDURE RHS780 or RHS780/1

1. Refer to Figure 1 and set up the RHS780 as shown.
2. Refer Figure 2 to locate access hole to the Calibration Switch(B) which is on the underside of the Circuit Board Cover (C) left of the LCD.
3. Remove the "Calibration Tool" (A) (RTI Part No. 360-81214-00) from the lower mounting hole of the circuit board cover next to the access hole to the Calibration Switch (B).
4. From the Main Menu, press the "Up Arrow" key five times to display "WEIGHT=XX.X LB" "SETUP? ←". Insert the metal end of the Calibration Tool into the access hole to the Calibration Switch and press the Calibration Switch (B) with the Calibration Tool (A). The display will read "WEIGHT = XX.X LB" "CHARGING".

The RHS780 is now Charging out the entire contents of the Charging Cylinder and the refrigerant needed to remain primed for use. It will automatically continue to the next step after 15 minutes has elapsed. Pressing the Calibration Switch a second time at any point during this procedure will cause the RHS780 to continue without waiting the entire 15 minutes. The display will read "CALIBRATION" "MIN WEIGHT ON ←".

5. Press the ENTER key. The display will read "CALIBRATION" "MAX WEIGHT ON ←".
6. Place the two 5 Kg weights (D) onto the square plate at the bottom of the Charging Cylinder (E) directly opposite to each other. Refer to Figure 3.
7. Press the ENTER key. The display will read "CALIBRATION DONE" "REMOVE WEIGHT ←".
8. Press the ENTER key. The display will then read "OVER CHARGE" "AMOUNT= X.XX KG←".
9. Press the "Up Arrow" key to change the value of the field. Press the "Right Arrow" key to change to a different field. The value entered will be stored until this procedure is run again and a new value is entered. Press the ENTER key to accept the value. The display will then return to the Main Menu.

Note: 1 oz = 0.02835 Kg & 1 Lb = 0.45359 Kg

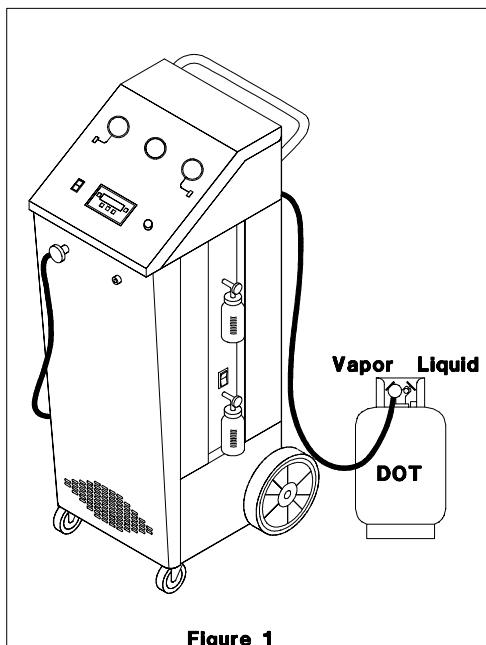


Figure 1

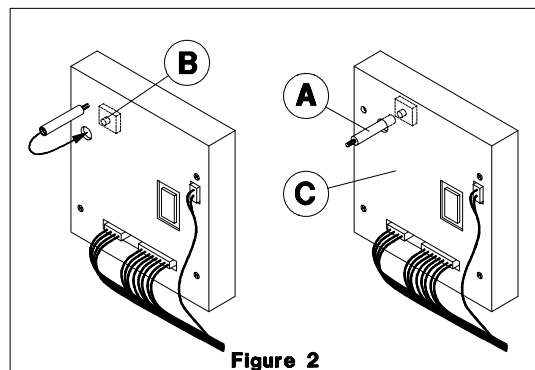


Figure 2

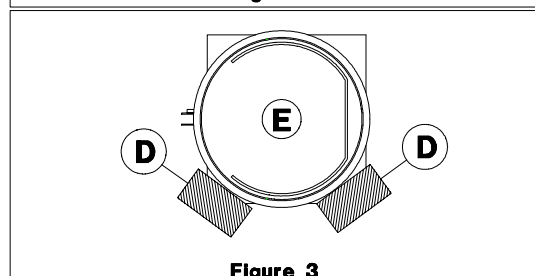


Figure 3