

How to update the MAHLE ACX2120H Software




ACX2120H/AC438 units can be updated quickly and easily via the USB port on the side of the machine and a flash drive. Follow the steps below if performing the update yourself or jump to step four (4) if you received a pre-imaged USB drive from MAHLE for your unit.

1. Download files

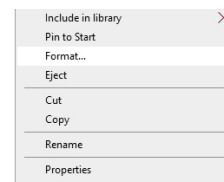
1. Obtain the needed update files via the MAHLE Tech Support team (tech.mss@mahle.com). The file can either be emailed to you or you will be provided a direct link to download the file.
 - If the file is sent as an email attachment, save it to a known folder or desktop on your Windows computer.
 - If a download link, click the download button - take note of what folder the file will be saved.
 - If the file does not end in ".zip", rename the file to end in ".zip"
2. Open Windows File Explorer and find the zipped file.
3. Unzip the file - you should end up with a single file nested in 3 folders of ACU → User→Devices.

2. Formatting a USB drive

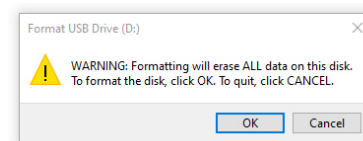
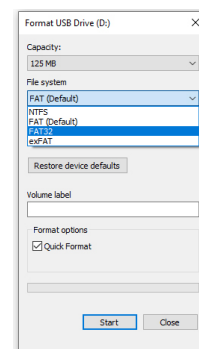
Using File Explorer to format USB to FAT32 is the easiest method. It is only possible to format a drive smaller than 32GB in FAT32 format using this method.

1. Insert in USB drive into the computer
2. Click the Start Menu.
3. Open File Explorer (click Windows button  and select "Documents" or hit windows key+E)

4. Right-click on USB drive and select format



5. If the File System isn't listed as FAT32, click on the drop-down menu and select it. Click 'Start'



Note: Any data previously contained on the USB drive will be removed during the formatting process.

6. Wait for the drive to format then click 'OK' once finished.

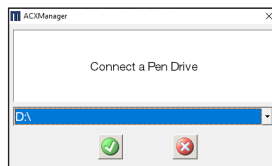
3.1 USB drive creation (automatic)

This step assumes a USB drive is already connected to the computer and properly formatted in FAT32 format per the instructions listed in step one (1).

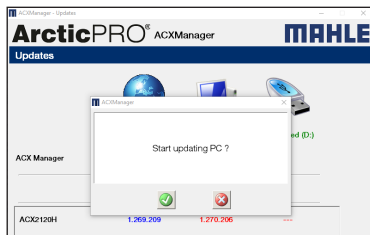
1. Open the MAHLE ACXManager program. (You can obtain the needed update files via the MAHLE Tech Support team at tech.mss@mahle.com. The file will either be emailed to you or you will be provided a direct link to download the file.)
2. Click the "Updates" button and you should receive a prompt asking for the USB drive letter.



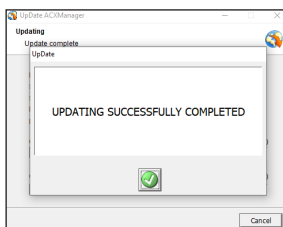
3. Select the drive letter that corresponds to the USB drive and select the green check mark button to continue.



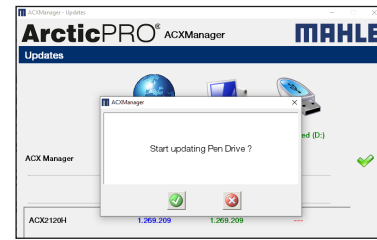
4. The updates screen will now appear showing the versions on the computer, what's on the server, and what's on the USB drive if already programmed. If the server has a newer version than what is installed locally, you will receive a prompt asking to update as shown below.



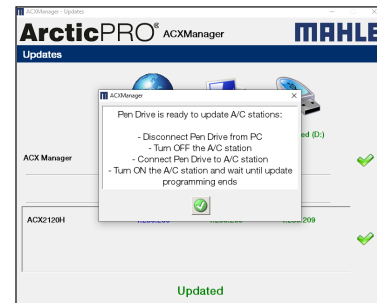
5. Select the green check box button to start the local update. Once complete, you'll receive the prompt shown below.



6. Click the green check mark button to close this window. You should now get a prompt to update the USB (Pen) drive. Click the green check mark to proceed.

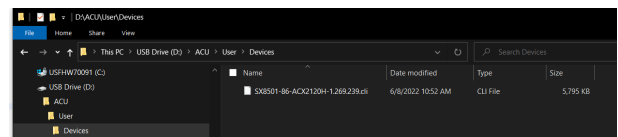


7. Once the update is complete, you should receive the prompt as shown below. Follow the instructions noted as the drive is now updated and ready for use to update the ACX2120H machine. Remove USB flash drive from your computer.



3.2. USB drive creation (manual)

1. Format a USB drive in FAT32 format (see step one at the beginning of this document for directions to format). NTFS or exFAT are not supported formats.
2. Move the unzipped file (ACU folder) to the flash drive.



3. Close the Windows Explorer window. Remove USB flash drive from your computer.

4. Install the update

1. Plug the USB drive into the side of the unit.
2. Power on the unit (Note the version of software currently installed and the version the prompt is saying will install.)
3. Click the 'enter' or 'return' button to install the new software (The unit will automatically install and reboot to complete the installation. Unit may reboot twice before completing the install.)
4. Once unit is back at the "home" screen, power off the unit and remove the USB flash drive.
5. You can now power the unit back on and use as normal.