

MAHLE

This card is a “Quick Start Guide” and is not meant to substitute for an instruction manual.

For additional information or more detailed instructions, please refer to the user manual using the provided QR Code.



www.servicesolutions.mahle.com
www.mpulse.mahle.com

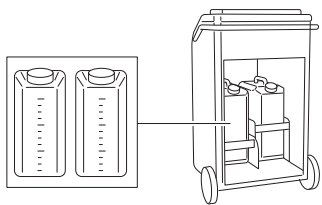
This Quick Guide is available in additional languages: scan QR Code to download



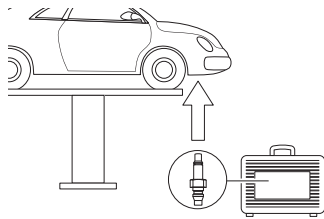
ATX-280
Quick start guide



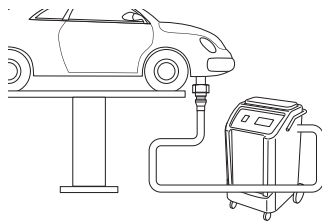
1. Check oil levels



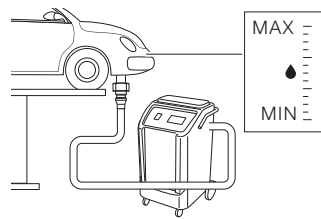
3. Connect adapters to vehicle



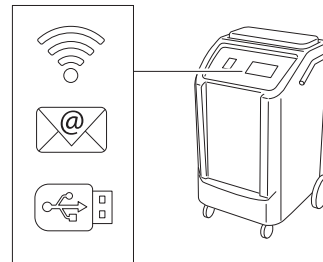
5. Connect hoses to adapters on vehicle



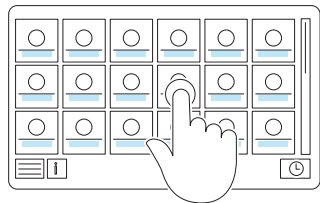
7. Check AT oil level in the gearbox



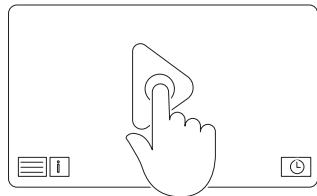
9. Print report



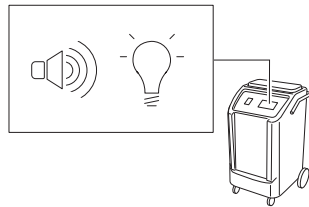
2. Choose make and car model



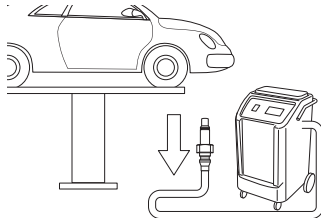
4. Press start



6. Wait till end of process



8. Disconnect hoses and adapters



Wear Personal Protective Equipment



Periodically check software version

