

RHS2780 CALIBRATION PROCEDURE

WEIGHT = XX.X LB
AUTOMATIC? XXX ←

▲▲▲▲▲

WEIGHT = XX.X LB
SETUP? XXX ←

Calibration Switch

WEIGHT = XX.X LB
CHARGING XXX

Calibration Switch (▲)

CALIBRATION
MIN WEIGHT ON ←

ENTER

CALIBRATION
MAX WEIGHT ON ←

ENTER

CALIBRATION DONE
REMOVE WEIGHT ←

ENTER

OVER CHARGE
AMOUNT = X.XX KG ←

▲▶ENTER

1. Use the "Right Arrow" key to select which refrigerant side will be calibrated.
2. Refer to Figure 1 and set up the RHS2780 as shown. Connect the service hose to the high side port and open the high side in/out valve. Remove the cover.
3. Refer to Figure 2 to locate access hole to the Calibration Switch(B) which is on the underside of the Circuit Board Cover (C).
4. Remove the "Calibration Tool" (A) (RTI Part No. 360-81214-00) from the lower mounting hole of the circuit board cover next to the access hole to the Calibration Switch (B).
5. From the Main Menu, press the "Up Arrow" key five times to display "WEIGHT=XX.X LB" "SETUP? XXX←". Insert the metal end of the Calibration Tool into the access hole and gently press the Calibration Switch (B). The display will read "WEIGHT = XX.X LB" "CHARGING XXX".

The RHS2780 is now Charging out the entire contents of the Charging Cylinder. It will automatically continue to the next step after 15 minutes has elapsed. Pressing the Calibration Switch a second time at any point during this procedure will cause the RHS2780 to continue without waiting the entire 15 minutes. The display will read "CALIBRATION" "MIN WEIGHT ON ←".
6. Press the ENTER key. The display will read "CALIBRATION" "MAX WEIGHT ON ←".
7. Place the two 5 Kg weights (D) onto the square plate at the bottom of the Charging Cylinder (E) directly opposite each other and as far towards the front of the RHS2780 as possible. Refer to Figure 3.
8. Press the ENTER key. The display will read "CALIBRATION DONE" "REMOVE WEIGHT ←".
9. Press the ENTER key. The display will then read "OVER CHARGE" "AMOUNT= X.XX KG←". To modify the over charge amount refer to the operator manual.
10. Press the ENTER key to accept the value. The display will then return to the Main Menu.

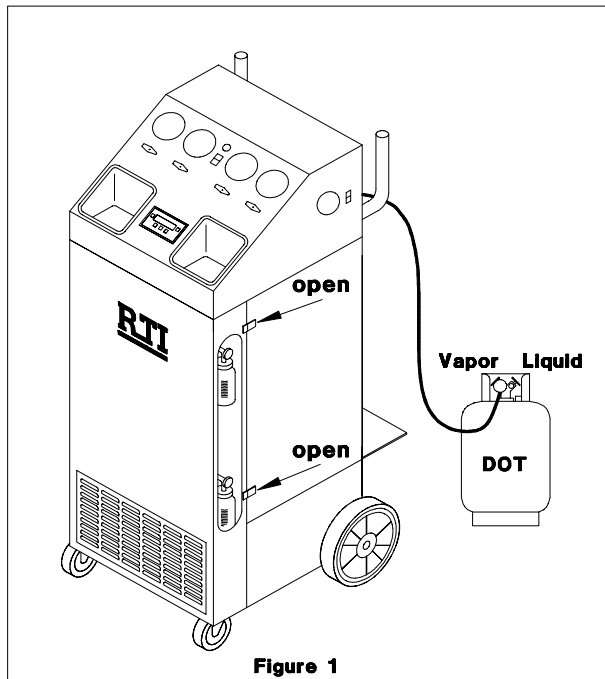


Figure 1

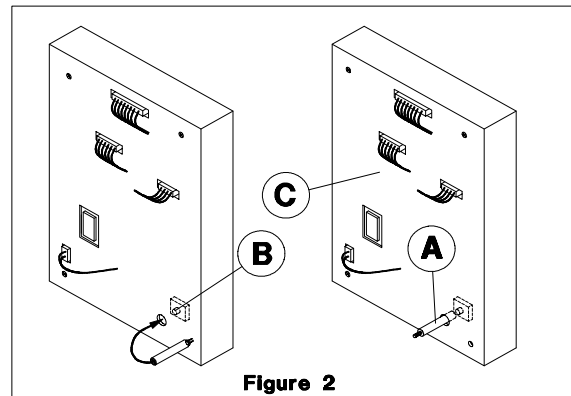


Figure 2

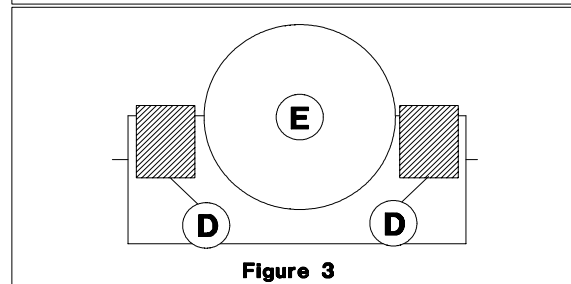


Figure 3